

MEADOWLANDS TRANSPORTATION BROKERAGE CORPORATION  
D/B/A EZ RIDE

144 Park Place East  
Wood-Ridge, NJ, 07075

tel: 201.939.4242  
fax: 201.939.2630

[www.ezride.org](http://www.ezride.org)



# Beyond the Journey to Work



# Contents

<i>Mission</i>	2
<i>Message from the Chair</i>	4
<i>Programs</i>	
01 Shuttles, Vanpools & Carpools Programs	6
02 EZ Ryde4Life Program	10
03 Bike & Pedestrian Program	14
<i>EZ Ride History</i>	18
<i>Board Members</i>	20
<i>Thank You</i>	21
<i>EZ Ride Contacts</i>	28

# Mission



Implement transportation programs and services that enhance the quality of life, regional mobility and economic opportunity for people in our area.

EZ Ride is the lead implementor for the Charge@Work and Electric Vehicle Adoption Leadership (EVAL) Certification programs in New Jersey.



## *A Letter from the Chairman*

# Driving Change: From Challenges to Trailblazing Solutions



Perry E. Frenzel, P.E., P.P.  
Chairman

Dear Friends of EZ Ride,

With immense pride and gratitude, I write to you today on behalf of EZ Ride as we celebrate a remarkable milestone in our journey - 40 years of providing essential transportation services to those who need them the most.

Looking back over these four decades, it is awe-inspiring to reflect on the incredible impact our organization has had on the lives of countless individuals and communities. What began as a humble effort to help employees with the journey to work by forming carpools and vanpools in the Meadowlands has grown into an extensive shuttle service program for commuters in multiple counties, a statewide transportation program for older adults with Lyft and Uber, and walking and biking programs focused on the young and old in five counties. And now, we are geared up to lead the implementation of a statewide effort to support workplace charging and encourage electric vehicle adoption – part of a national effort.

Over the years, we have witnessed countless stories of resilience and determination of those we serve. From providing transportation to medical appointments for older adults to ensuring that children can walk and bike safely to school, our impact has rippled through the fabric of our communities. We have been there for our elderly neighbors and low-income families, ensuring they can access opportunities and essential services that many of us often take for granted.

None of this would have been possible without the unwavering support of our dedicated staff, trustees, funding partners, and the communities we serve. Your commitment and belief in our mission have been the driving force behind our success.

As we stand at this remarkable juncture, we are not just celebrating the past 40 years but also looking ahead with a renewed sense of purpose and determination. The challenges facing our society continue to evolve, and so must we. In the coming years, we are committed to expanding our services, embracing innovation, and fostering deeper

community connections. With your continued support, we are confident that we can make an even more significant impact on the lives of those we serve.

In closing, I express my deepest gratitude to everyone who has been a part of our journey. Your support has been the cornerstone of our success, and we are excited to embark on the next chapter of our mission with you by our side.

Here's to 40 years of service and many more years of making a difference in the lives of those we serve. Thank you for your support and belief in our mission.

With warm regards,

Perry E. Frenzel, Chairman  
September 27, 2023

01

# Shuttles, Vanpools & Carpools

*Serving a Niche Market*



“Our tenants wanted their employees, customers, and guests to be able to access public transit at the Secaucus Junction train station. Since the station is a short train ride from New York’s Penn Station and most of New Jersey Transit’s lines go through it, a reliable link between Harmon Meadow and Secaucus would greatly expand the number of people who could get to the property without cars. The EZ Ride shuttles played a pivotal role in making this vision a reality.”

—Sal Gentile,  
Executive Vice President,  
Hartz Mountain Industries



# Shuttles, Vanpools and Carpools Program

At EZ Ride, shuttles and to a lesser extent carpools and vanpools have been the backbone of our journey to work commuter programs.

The shuttle service business faced severe setbacks as ridership plummeted due to the impact of COVID-19 and the shift towards hybrid workplaces. However, there's some encouraging news as of 2022. After plummeting from 623,000 rides to just 92,000 in a span of two years, the rebound to 157,000 rides in 2022 and further growth to 175,000 in 2023 signals a positive trend, possibly indicating a modest but sustainable recovery. While it's still a long way from a complete recovery, it instills a sense of optimism.

Meanwhile, our client base in the private sector has become more specialized, primarily catering to real estate companies — both in the residential and commercial sectors — using the amenity of a reliable shuttle service to attract and retain tenants. However, even in this niche, we've had to downsize our fleet and

service levels. The ongoing shortage of drivers and rising driver expenses continue to pose challenges and significantly hinder the expansion efforts.

Additionally, our fleet is aging as we've refrained from purchasing fossil-fueled vehicles, eagerly awaiting the arrival of electric vehicles, which unfortunately have faced significant delays. In the interim, we're actively preparing for the installation of electric chargers in the adjacent lot that we've acquired. We intend to be well-prepared to receive and operate electric vehicles as soon as they become available. At present, the shuttle program remains in a holding pattern as we navigate these challenges.

Meanwhile, our Vanpool program — the mode of choice for long-distance commuters has fallen precipitously from 26 vanpools in 2019 to 9 vanpools in 2023. During this time, the riders, mostly blue-collar workers, have dwindled from 200 to 75. All indicators suggest that those numbers are likely to fall even further.

## Harmon Meadow Shuttle: A Beacon of Consistency

One shining example of our service's impact is the Harmon Meadow Shuttle. Harmon Meadow in Secaucus includes more than two million square feet of first-class office space, nine hotels, 16 distinctive restaurants, luxury apartments, a new state-of-the-art movie theatre, an on-site convention center, shopping and essential services such as a post office, banks, and a LA Fitness Signature Club -- all within walking distance of each other.

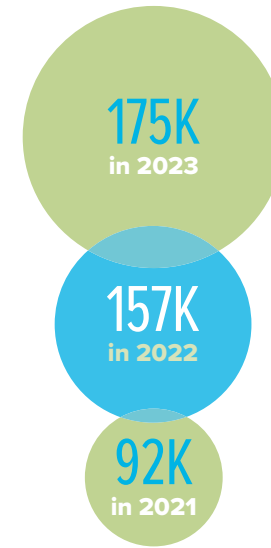
The Harmon Meadow Shuttle has served the community for over 17 years, commencing operations in December 2005. The only disruption occurred during a three-month period in 2020 when the COVID-19 pandemic

mandated the temporary suspension of all shuttle services.

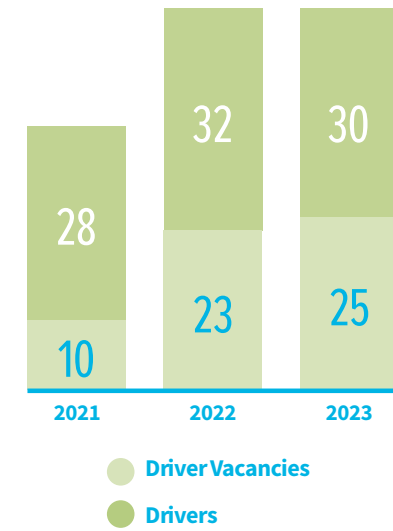
The complimentary shuttle service is funded by Hartz Mountain Industries and is designed to serve businesses in the Harmon Meadow area as well as the residents of Harper Apartments at 100 Park Plaza Drive and Osprey Cove at 45 Meadowlands Parkway in Secaucus. The shuttles link with the Secaucus Junction Train Station utilizing a fleet of three vehicles. Service is available Monday through Friday during the peak hours, 6:45 a.m. to 10:30 a.m. and 4 p.m. to 8:12 p.m..

## Shuttle Program Trends

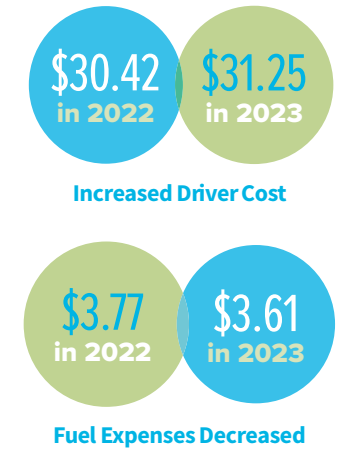
### RIDERSHIP



### SHUTTLE DRIVERS



### EXPENSES



### PARTNERS



### THE FLEET



### THE DRIVERS



### THE RIDES



## Vanpool Program Trends

### VANPOOLS



65% decrease

### VANPOOLERS



63% decrease

### VANPOOLS BY COMPANY

Company	No. of Vanpools	No. of Vanpoolers
Merck	3	22
Nuts.com	2	12
Garfield Industries	1	14
Thomas Ma	1	11
Yoland Corp.	1	10
Kerry Ingredients	1	6
<b>Total:</b>	<b>9</b>	<b>75</b>

02

# EZ Ryde4Life

*Ridership Doubles Again*



“

The EZ Ryde4Life Program has been incredibly beneficial to our seniors. Because of the safe and reliable transportation provided by this program, our seniors can continue to lead independent and fulfilling lives, with the flexibility to do more of what they love. In delivering this essential service, we solidify our unwavering commitment to the well-being of our County's residents. In Bergen County, there is opportunity and access for everyone.”

—James J. Tedesco III,  
Bergen County Executive



## EZ Ryde4Life Program

The EZ Ryde4Life program, which leverages Lyft and Uber to provide transportation services, is a resounding success story. The number of participants surged by an impressive 43%, rising from 2,100 in 2022 to 3,000 riders in 2023. And ridership doubled for the second consecutive year from 33,000 rides to 74,000 rides. The future looks even more promising, with expectations to provide over 100,000 rides in the upcoming year.

The statewide program caters to a diverse clientele, reflected in the varying trip lengths and costs. While some clients in Atlantic County incurred trip costs exceeding \$250, trip lengths of over 70-miles, and durations exceeding 90 minutes – an obvious exception - the average trip cost in the more urban areas averaged around \$18, covering five miles with a travel time of approximately 15 minutes.

Medical trips, including dialysis, continue to dominate the purpose of these rides, accounting for more than half (52%) of all the rides. Food shopping came a distant second, making up 13% of the trips. Accessing social

### Bergen County: A Remarkable Journey of Growth

The Bergen County Department of Human Services, Division of Senior Services embarked on its journey with the program in March 2021. Initially, ridership remained modest throughout the first year. However, everything changed dramatically in 2022, as ridership surged six-fold from around 250 rides in July to an impressive 1,500 by June 2023.

Bergen County uses the program to complement its existing services, primarily focusing on serving low-income senior residents, particularly those experiencing financial hardship. This program enables the County to meet transportation needs beyond regular working hours, extend services to the County's outskirts, and even facilitate trips beyond the County borders. An added benefit is the effective elimination of no-shows, as the rides are dispatched only when the rider is ready and requests the service.

services and recreation accounted for 9% and 8%, respectively.

A remarkable aspect of the program is that eight organizations fund an overwhelming 94% of all the rides. In March of 2023, we introduced a fledgling subsidy program to assist participants without sponsors on limited budgets, and struggling to cover the ride costs. The initiative saw 54 predominantly women riders take advantage of the subsidy program, resulting in 282 subsidized rides.

We extend our heartfelt gratitude to NJ TRANSIT for their grant support, which facilitated customized software development. This software seamlessly integrates with Lyft Concierge and Uber Health portals and assists in generating more than 100 invoices to account for the thousands of rides we provide each month.

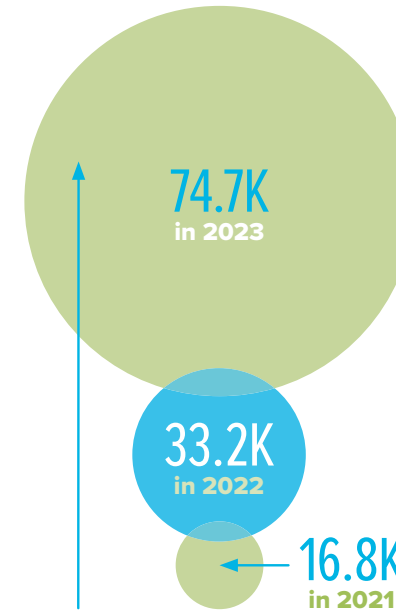
Such is the impact of our program that it has been featured as a compelling case study on the Lyft website.

The EZ Ryde4Life program continues to make strides in revolutionizing transportation services, improving accessibility, and ensuring that essential trips are never compromised. With unwavering support from both organizations and grateful riders, it promises an even brighter future for communities across the state.

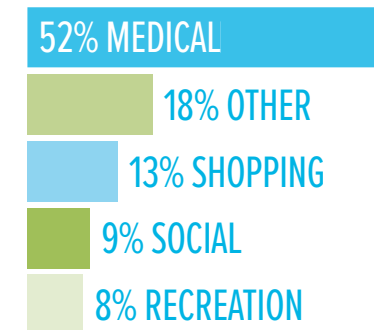
“Access to transportation is a critical component of aging in place in Bergen County,” said Bergen County Commissioner Chairman Tom Sullivan. “We continue to prioritize accessibility and strive to improve ease of transportation around our county. Thanks to the EZ Ride program, our seniors are able to remain independent while ensuring they can attend medical appointments and events with flexibility and convenience.”

## EZ Ryde4Life Program Trends

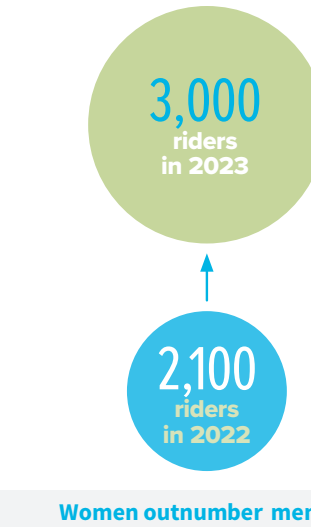
### GROWING RIDERSHIP



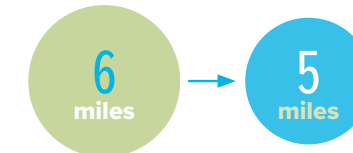
### TRIP PURPOSE



### 900 NEW RIDERS



### REDUCED TRIP LENGTH



### REDUCED TRIP COST



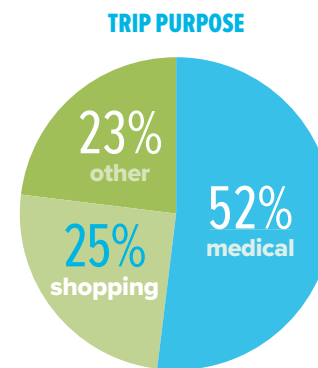
### SPONSORED RIDES: CONTINUED GROWTH



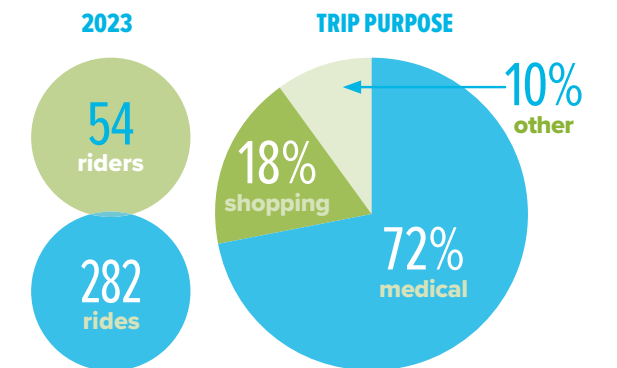
### Riders With No Sponsors



Women outnumber men 3:1



### Riders Sponsored By EZ Ride



Women outnumber men 5:1

03

# Bike & Pedestrian

*Focus on Disadvantaged Communities*



“ Over the last two years, I have directed our administrative team to develop new traffic initiatives to improve pedestrian, bicycle, and driving safety such as adding angled parking and creative crosswalks. These changes have resulted in a reduction in speeding and traffic crashes. In fact, over the past two years, the City of Passaic has had zero fatal traffic crashes. We look forward to working in partnership with EZ Ride over the coming years to make Passaic roads safer for all users”

—Hector Lora,  
Mayor of Passaic, NJ



# Bike & Pedestrian Program

In the past year, the Bike and Pedestrian Program has made exceptional strides in promoting safe walking and biking by collaborating with nearly 200 schools, municipalities, and non-profit organizations. This concerted effort led to the organization of nearly 700 events, ranging from safety presentations to community bike rides and demonstration projects, which collectively engaged over 67,000 participants. An impressive outcome of these endeavors was the doubling of Safe Routes to School (SRTS) awardees,

which surged from just over 100 in 2021 to more than 200 in 2023.

The primary focus of these efforts was on disadvantaged communities, with over two-thirds of the organizations, events, and participants originating from these underprivileged areas. Notably, more than 80% of the 204 SRTS awardees also hailed from disadvantaged communities. Among these communities was the City of Passaic.

## City of Passaic: A Beacon of Change

Passaic, with its 70,537 residents, is characterized by a population where 73.4 percent identify as Hispanic or Latino. The Passaic school district, boasting 21 schools, is one of the 31 former Abbott districts in the state. Pedestrian and bike safety have been pressing concerns in Passaic, with statistics revealing 461 collisions involving pedestrians and cyclists in the period between 2018 and 2020. These collisions accounted for 25 percent of the 1,841 pedestrian crashes in the entirety of Passaic County during the same period.

In response to these challenges, EZ Ride embarked on a multi-year collaborative effort with the City of Passaic and the Passaic School District, implementing several impactful initiatives:

**January 2017:** Conducted two Safe Routes to School (SRTS) walk and bike audits around Schools 2, 8, and 9. These audits played a pivotal role in securing a \$425,000 SRTS Infrastructure grant for the City in 2022.

**2022-2023:** Conducted Safe Routes to School safety talks, attended by more than 1,100 Passaic students and parents in Schools 2, 8, 9, 20, and 21.

**January 2023:** Assisted and nominated eight schools for SRTS Recognition Awards, securing Gold (1), Silver (2), and First Step (5) awards.

**March 2023:** Partnered with Passaic Schools Superintendent Sandra Montanez-Diodonet and the Board of Education, leading to the adoption of a district

wide SRTS Policy in March 2023. This policy will pave the way for more schools in Passaic to achieve a Gold SRTS Award in the future.

**May 2023:** Partnered with the City of Passaic to install a temporary art-based demonstration project at the intersection of Hope Avenue & Monroe Street. This project was designed to enhance community safety, especially because this intersection witnessed four pedestrian and four cyclist accidents since 2020, as well as 48 car crashes, though fortunately, no fatalities occurred.

Passaic City Administrator Ricardo Fernandez said the City and EZ Ride worked on a new temporary road design at the intersection of Hope Ave and Monroe Street. It included high-visibility crosswalks, an artistic intersection mural to slow drivers and calm traffic, and curb extensions to prevent vehicles from parking at corners and obstructing the view of pedestrians and drivers. The temporary changes allowed residents to assess and see if the design helps slow traffic and makes crossing streets safer. The City could make the changes permanent if the feedback is positive.

These initiatives stand as shining examples of how concerted efforts, community engagement, and policy changes can drive transformation in disadvantaged communities, making our streets safer for everyone. The Bike and Pedestrian Program remains committed to these vital endeavors as we move forward.

# Bike & Pedestrian Program Trends

## Focus on Disadvantaged Communities

### COMMUNITIES

191 schools & municipalities  
132 or 69% from disadvantaged communities

### EVENTS

685 events  
461 or 67% from disadvantaged communities

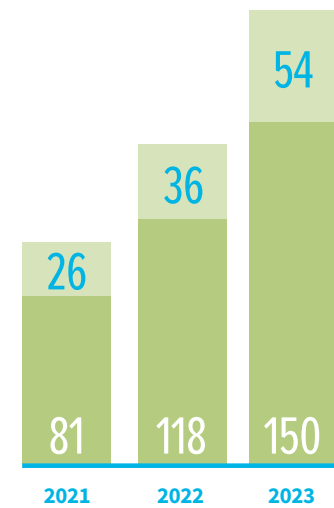
### PARTICIPANTS

67,570 total participants  
50,161 or 74% from disadvantaged communities

### EVENT TOPICS

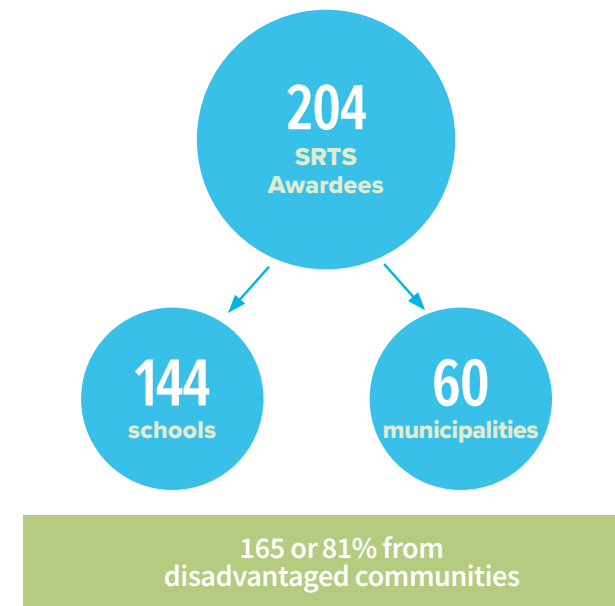
- Safety Presentations
- Walk & Roll to School Events
- Poster Contests
- Bike Trains & Walking School Buses
- Anti-Idling & StreetSmart Campaigns
- Road Safety Audits
- Community Bike Rides
- Demonstration Projects
- Travel Audits & Travel Plans
- Assistance With Policy Adoption

## SAFE ROUTES TO SCHOOL AWARDEES



● Disadvantaged Communities  
● Other Communities

## SRTS AWARDEE STATS-2023



## ACHIEVEMENTS

- 2 Communities adopted Crossing Guard Policy
- 4 Communities adopted a Safe Routes to School (SRTS) Policy
- 3 Communities hosted demonstration projects

## GIVEAWAYS & INFORMATION

15 bikes

550 bike helmets

7,000 StreetSmart tip cards

19,600 safety fliers & bookmarks

## BIKE TO WORK

manage 58 bike lockers

at 5 train stations

# In a Few Words

## *EZ Ride and Oh, What a Ride it has Been!*

The Meadowlands Transportation Brokerage Corporation (Meadowlink/ EZ Ride) was conceived, proselytized for and then incorporated in 1983 by Rich Roberts, chief transportation planner of the then HMDC and Rich Fritzky, president of the Meadowlands Chamber of Commerce as the first Transportation Management Association (TMA) in the state of New Jersey. This was in response to a 'Gas Crisis' and to the immediate desire to do everything possible to close the gaps in the public transit network that precluded those in the cities of Newark, Jersey City, Paterson, and Hackensack from accessing the jobs being developed in the Meadows.

### *Forging*

In the formative days, while the Chamber would well appeal to leaders in the private sector to serve on the Board of what was to be a public/private partnership, we were blessed in receiving the support of Governor Tom Kean in not only securing commitments to serve from his Commissioner of Transportation, the Executive Directors of six State Agencies, as well as the County Executives of both Bergen and Hudson, but most importantly and also in garnering startup revenue from the five - State entities. On the private side, we focused on larger employers that would tie Meadowlink to the major employment nodes in the district, i.e., Meadowlands Corporate Center, Teterboro, Harmon Meadow, Harmon Cove and more.

### *Serving*

Joe Carragher, formerly the Executive Director of the NJ Highway Authority agreed to delay retirement in Meadowlink's second year, after it floundered in its first. In 3.5 years, he had it humming with everything from subscription buses, a wide variety of shuttles, van pools, carpools and more. But his greatest gift to Meadowlink was in first saving it and then in finding Krishna Murthy to take his place.

### *Enter Krishna*

When Krishna came in 1992, there were but three employees operating from a small office, humorously referred to as the "broom closet" at the former HMDC in Lyndhurst. Since then, Meadowlink has grown just prior to the onset of covid pandemic to a team of over 150 employees. As to the annual budget, it went from \$320,000 to more than \$8,000,000.

Programs expanded to include a 24x7 shuttle service operated with a fleet of 30 minibuses, transporting over 2,000 riders daily. And each year, the team assisted more than 100-200 municipalities and schools in implementing safe biking and walking programs. Furthermore, through partnerships with Lyft and Uber, provided over 8,000 rides/ month for older adults.

### *National Recognition*

In 2008, EZ Ride was presented with the Outstanding Transportation Management Association (TMA) Award by the Association for Commuter Transportation (ACT). The award is presented to the TMA that best uses its public/private partnerships to achieve local or regional transportation goals.

The Community Transportation Association of America (CTAA) followed in recognizing EZ Ride as the 2013 Urban Community Transportation System of the Year. This award recognized excellence where an urban transportation system best serves the needs of people in their communities. EZ Ride was selected for "innovative and creative collaborations."

### *Not Everything Worked*

Despite our efforts, not every initiative achieved the desired success. Our attempts to launch a carshare program in the Meadowlands and a bikeshare program in Newark did not take off as anticipated. Our volunteer

driver program faced overwhelming demand, surpassing our capacity to recruit voluntary drivers.

Damn that covid, that destroyer of life and of any and all efforts to serve, the Covid that tried to kill us. More than 100 employees, largely drivers, of course, had to be let go, including some who had been with us for decades. Lean and mean and sad, we go forward to retool and recreate as best we can.

Flex-T program designed to serve people with disabilities was shuttered after 10-years of hard work.

Shuttle Services were devastated, but the good news is that the worm turned in 2022. For when you drop from 623,000 rides to 92,000 in two years, the click back up to 157,000 in 2022 is certainly a positive development and may well be indicative of a sustaining uptick. A long, long way from home to be sure, but it gives you pause to believe again.

EZ Ryde4Life services using Lyft and Uber for older adults are just booming, having risen by a rate of more than 400% in just three-years, and is geared to provide more than 100,000 rides this year.

Bike and Pedestrian services also are encouraging because there's a clear uptick in the number of schools and municipalities that received SRTS awards from 100+ in 2018 to 200+ in 2023.

The numbers for Van Pooling continue to dive, but the fact that 10 of the original 45 vehicles are still out there gives one hope. Maybe mostly dead but "ain't dead yet".

### *Looking Forward*

Throughout our 40-year journey, there is one word that truly defines our organization: resilience. We have been willing to take risks, embrace failure as a learning opportunity, and demonstrate an entrepreneurial and proactive spirit uncommon in non-profit organizations.

As the hybrid workplace becomes the norm, reducing the demand for carpools, vanpools, and shuttles, and with a growing concern for safety and climate change, we are gearing up to adapt to a changing transportation landscape to meet the evolving needs of our communities.

**Diversifying trip purposes:** Beyond the journey to work to shopping, healthcare, recreation, and social activities.

**Embracing technology and innovation:** integrating our services with ride-hailing companies like Lyft and Uber.

**Promoting affordability & equity:** Providing a discount of 50% for rides provided to Medicaid clients using our program with Lyft and Uber.

**Introducing new initiatives:** Such as speed studies, workplace charging infrastructure, and fleet electrification programs to enhance safety and mitigate climate change.

The good news is that Meadowlink has the minds and the talent to grapple with all of this. In the end, to me, it's the human drama, the blood, sweat and tears in it all, the emotional expenditure, the gift giving in thought and action that most matters. They will go forward to serve in new and different ways. The forever Chairman of Meadowlink for 23-years, Perry Frenzel, is talking about a change in perspective, i.e. from measuring volume to measuring value. And for the first time, the specter of autonomous cars has been mouthed. God save us all.

*Bless the Hundreds upon Hundreds of Noble Souls who devoted so very, very much!!!*

**Richard Fritzky, Co-Founder**

# Board of Directors



**Perry E. Frenzel, P.E., P.P.**  
Chairman  
Principal Associate,  
PNJ/Frenzel Assoc., LLC



**Patricia Ott, P.E.**  
Vice Chair  
Managing Member,  
MBO Engineering, LLC



**Chip Hallock**  
Secretary  
President & CEO,  
Newark Regional Business  
Partnership



**Ronald E. Nichols**  
Treasurer

## Trustees

**David Behrend**, Executive Director,  
North Jersey Transportation Planning Authority, Inc.

**Scott Bogren**, Executive Director,  
Community Transportation Association of America

**Robert R. Ceberio**, President,  
RCM Ceberio, LLC

**Diana E. Fainberg**, President,  
Diana E. Fainberg Associates, LLC

**Sal Gentile**, Executive Vice President,  
Hartz Mountain Industries, Inc.

**Hailey Graf**, Senior Facilities Planner,  
New Jersey Transit

**Kent E. Hansen**, Senior Staff Attorney,  
Pro Bono Partnership, Inc.

**James Kirkos**, President & CEO,  
Meadowlands Chamber

## Trustee Emeritus

**Richard Fritzky**, Director of Public Affairs,  
Meadowlands Regional Chamber

**Anthony Scardino**, President,  
Anthony Scardino & Associates

# Thank You

## Funders

North Jersey Transportation Planning Authority  
NJ TRANSIT  
New Jersey Department of Transportation  
New Jersey Division of Highway Traffic Safety

## Non-Profit Partners

Pro Bono Partnership  
Nonprofits Insurance Alliance

## Shuttle Program Partners

Essex County	The Winston at Lyndhurst
Hartz Mountain Industries, Inc.	The Station at Lyndhurst
HelloFresh	The Monarch
HMart	Water's Edge
One Harrison	Vermella Lyndhurst
Sofi Lyndhurst	

## EZ Ryde4Life Program Partners

Affordable Housing Alliance	Ocean Community Economic Action Now, Inc. (O.C.E.A.N., Inc)
Bergen County	Township of Montclair
Caregiver Volunteers of Central Jersey	Visiting Nurse Association of Central Jersey
Clinilabs Drug Development Corp.	
Essex County	



## Bike & Pedestrian Program Partners

### Bergen County

#### Borough of Allendale

Hillside Elementary School

#### Borough of Bergenfield

Bergenfield Public Schools District

Bergenfield High School

Hoover Elementary School

Jefferson Elementary School

#### Borough of Closter

#### Borough of Cresskill

Cresskill Middle School

Edward H. Bryan School

#### Borough of East Rutherford

East Rutherford Police Department

#### Borough of East Edgewater

East Edgewater Police Department

#### Borough of Emerson

Emerson School District

Patrick M. Villano Elementary School

Memorial Elementary School

#### City of Englewood

Dr. John Grieco Elementary School

Dr. Leroy McCloud Elementary School

#### Borough of Fair Lawn

Fair Lawn School District

Fair Lawn High School

John A. Forrest Elementary School

Henry B. Milnes Elementary School

Lyncrest Elementary School

Radburn Elementary School

Warren Point Elementary School

#### Borough of Fort Lee

Fort Lee High School

#### City of Garfield

Christopher Columbus School 8

Garfield High School

#### City of Hackensack

Jackson Avenue Elementary School

#### Borough of Harrington Park

#### Borough of Hasbrouck Heights

Hasbrouck Heights Green Team

Lincoln Elementary School

#### Borough of Ho-Ho-Kus

Ho-Ho-Kus Police Department

#### Borough of Leonia

Leonia High School

Leonia Middle School

Leonia PTO

#### Borough of Lodi

Lodi High School

#### Township of Lyndhurst

Lyndhurst High School

#### Borough of Montvale

#### Borough of Moonachie

#### Borough of New Milford

BF Gibbs Elementary School

New Milford High School

New Milford Police Department

#### Borough of North Arlington

North Arlington High School

#### Borough of Northvale

#### Borough of Norwood

#### Borough of Oakland

#### Borough of Paramus

#### Borough of Ramsey

Mary A. Hubbard Elementary School

Wesley D. Tisdale Elementary School

#### Borough of Ridgefield

Ridgefield Memorial High School

#### Village of Ridgewood

Ridgewood Park & Recreation

Somerville Elementary School

#### Borough of River Edge

River Edge School District

Cherry Hill Elementary School

Roosevelt Elementary School

#### Township of Rochelle Park

Rochelle Park Police Department

#### Borough of Rockleigh

#### Borough of Rutherford

Kindergarten Center

Lincoln Elementary School

Pierrepont Elementary School

Rutherford High School

Washington Elementary School

Rutherford Police Department

Mayor's Wellness Committee

Rutherford School District

#### Township of Saddle Brook

Franklin Elementary School

#### Township of Teaneck

Teaneck Community School

Teaneck High School

Theodora Smiley Lacey ELC

#### Borough of Teterboro

#### Borough of Waldwick

Julia A. Traphagen Elementary School

#### Borough of Wallington

Jessie F. George Elementary School

Washington/Westwood Regional School District

Washington Elementary School

Washington Township Green Team

#### Township of Washington

#### Borough of Westwood

Berkeley Elementary School

Brookside Elementary School

#### Township of Wyckoff

Calvin Coolidge Elementary School

Washington Elementary School

### Essex County

#### Township of Belleville

Belleville Green Team

Belleville Public Schools District

Belleville School 7

Belleville High School

Belleville Middle School

Belleville Police Department

#### Township of Bloomfield

Bloomfield Police Department

#### Borough of Caldwell

Grover Cleveland Middle School

Lincoln Elementary School

#### Township of Cedar Grove

Cedar Grove Police Department

#### City of East Orange

Johnnie L. Cochran Jr. Academy

#### Borough of Glen Ridge

Glen Ridge Police Department

#### Township of Irvington

Chancellor Avenue Elementary School

Irvington High School

Madison Avenue Elementary School

#### Township of Maplewood

Clinton Elementary School

Delia Bolden Elementary School

#### Township of Montclair

Edgemont Montessori School

Hillside School

Nishuane School

Watchung School

Charles H. Bullock School

#### City of Newark

Newark Office of Violence Prevention & Trauma Recovery

American History High School

Ann Street School

Arts High School

Avon Avenue Elementary School

Barringer High School

Chancellor Avenue School

Chancellor Avenue Annex

Grover Cleveland School

Elliott Street School

First Avenue School

Harriet Tubman School

Hawkins Street School  
 Luis Munoz Marin School  
 Marion P. Thomas Charter School  
 Michelle Obama School  
 Mount Vernon School  
 Phillips Academy Charter School  
 Rafael Hernandez School  
 Ridge Street Elementary School  
 Science Park High School  
 Technology High School  
 Weequahic High School  
 University High School

**Township of Nutley**

Spring Garden Elementary School

**City of Orange Township**

Central Elementary School  
 Forest Street Elementary School  
 Heywood Avenue School  
 Lincoln Avenue Elementary School  
 Oakwood Avenue Community School  
 Orange Public Schools  
 Park Avenue Elementary School  
 Rosa Parks Community School

**Township of South Orange Village**

South Orange Police Department  
 Walk, Bike, Ride South Orange

**Township of Verona**

Brookdale Avenue School  
 Frederick N. Brown School  
 Forest Avenue School  
 H.B. Whitehorne Middle School  
 Laning Ave Elementary School  
 Our Lady of the Lake School  
 Verona High School

**Township of West Orange**

Gregory Elementary School  
 Hazel Avenue Elementary School

Kelly Elementary School  
 Redwood Elementary School  
 St. Cloud Elementary School  
 Washington Elementary School  
 West Orange High School  
 West Orange Pedestrian Safety Advisory Board

**Monmouth County**

**City of Asbury Park**

Mayor’s Wellness Committee  
 Bradley Elementary School  
 Dr. MLK Jr. Middle School  
 Thurgood Marshall School

**Borough of Atlantic Highlands**

Mother Teresa Regional School

**Borough of Avon-by-the-Sea**

**Borough of Bradley Beach**

Bradley Beach Elementary School

**Township of Colts Neck**

**Borough of Deal**

Deal Elementary School

**Borough of Eatontown**

Eatontown Complete Streets Advisory Committee  
 Eatontown Complete Green Team

**Borough of Farmingdale**

Farmingdale School

**Township of Hazlet**

Raritan Valley Elementary School

**Township of Howell**

Howell Green Team

**Borough of Little Silver**

Markham Place Middle School  
 Point Road Elementary School

**City of Long Branch**

Amerigo A. Anastasia School  
 George L. Catrambone School  
 Gregory Elementary School  
 Joseph M. Ferraina Early Childhood Learning Center  
 Morris Avenue Early Childhood Learning Center

**Township of Middletown**

River Plaza Elementary School

**Township of Neptune**

Midtown Community School  
 Neptune Middle School

**Borough of Red Bank**

Red Bank Primary School  
 Red Bank Middle School  
 St. James Elementary School

**Borough of Rumson**

Deane Porter Elementary School  
 Forrestdale Elementary School  
 Rumson County Day School

**Borough of Shrewsbury**

Shrewsbury Borough Elementary School

**Borough of Spring Lake Heights**

**Passaic County**

Passaic County Recreation Dept.

**City of Clifton**

Clifton School One  
 Clifton School Eleven  
 Clifton School Seventeen  
 Christopher Columbus Middle School  
 Neighborhood Ped Safety Work Group  
 Steps to A Healthier Clifton Coalition

**Borough of Hawthorne**

**Borough of North Haledon**

**City of Passaic**

Etta Gero School 9  
 Mario J. Drago School 3  
 Sonia Sotomayor School 21  
 Passaic Recreation Department

**City of Paterson**

Paterson School District  
 Charles Riley School 9  
 Dr. Hani Adawallah School  
 Senator Frank Lautenberg School 6  
 Paterson School 16  
 Paterson School 20  
 Police Summer Explorers Camp  
 Young Mens Leadership Academy

**Borough of Prospect Park**

**Union County**

**Township of Cranford**

Cranford Complete Streets Committee

**City of Elizabeth**

Elmora Hills Community Blockwatch  
 Elizabeth Public Schools  
 Elmora School No. 12  
 Frank J. Cicarell Academy  
 John E. Dwyer Technology Academy  
 Joseph Battin School No. 4  
 Joseph Battin School 4 Annex  
 Juan Pablo Duarte - Jose Julian Marti School No. 28  
 Sonia Sotomayor School 25  
 Thomas Jefferson Arts Academy  
 William F. Halloran School No. 22  
 Winfield Scott Elementary School

**Borough of Fanwood**

**Township of Hillside**

Hillside Police Department

**Borough of Garwood**

Lincoln Elementary School

**City of Linden**

Deerfield School 9  
 Highland Avenue School 10  
 Linden School 4  
 Linden School 5  
 Linden School 6  
 Linden School 8

**City of Plainfield**

Dewitt D. Barlow School  
 Emerson School  
 Frank J. Hubbard Middle School  
 Jefferson Elementary School  
 Maxon Middle School  
 Plainfield Academy for Arts & Advanced Studies  
 Plainfield High School  
 Queen City Academy Charter School

**City of Rohway**

Grover Cleveland Elementary School  
 Dr. Charles Polk Elementary School  
 Grace Wilday Junior High School  
 Harrison Elementary School  
 Washington Elementary School

**Borough of Roselle Park**

Sherman Elementary School  
 Robert Gordon Elementary School  
 Roselle Park Middle School

**Township of Scotch Plains**

J. Ackerman Coles Elementary School  
 Brunner Elementary School

McGinn Elementary School

**Township of Union**

Franklin Elementary School  
 Washington Elementary School  
 Union Township Police Department

**Township of Westfield**

Westfield Public Schools

**Township of Winfield**

Winfield Elementary School  
 Winfield PTO  
 Winfield Police

*Highway Traffic Safety (HTS)*

**Bergen County**

**Borough of Bergenfield**

Bergenfield High School  
 Hoover Elementary School

**Borough of Cliffside Park**

Cliffside Park Senior Center

**Borough of East Rutherford**

Southwest Senior Activity Center

**Borough of Emerson**

Memorial Elementary School

**City of Hackensack**

Dr. Martin Luther King Senior Center

**Borough of Leonia**

Leonia Middle School

**Village of Ridgewood**

Ridgewood Park & Recreation

**Township of Wallington**

Wallington Senior Center

**Essex County**

**City of Orange**

First Fellowship Cathedral  
 Forest Street Elementary School  
 Heywood Avenue Elementary School  
 Orange Recreation & Historic Preservation Committee  
 Orange Senior Center

**City of Newark**

Chancellor Avenue Early Learning Center Annex  
 University Hospital Newark Ironbound Men’s Health Fair  
 Mount Carmel Church  
 Newark Board of Education  
 Newark Senior Center  
 University Hospital

**Monmouth County**

**Township of Middletown (Lincroft)**

Monmouth Children’s Museum

**Borough of Red Bank**

St. James Elementary School

**Borough of Rumson**

Deane Porter Elementary School  
 Forrestdale Elementary School

**Passaic County**

**City of Clifton**

Clifton School One  
 Clifton School Seventeen

**City of Passaic**

Passaic Recreation Department

**City of Paterson**

Paterson Senior Center  
 St. Joseph’s Hospital  
 Paterson School 16

**Union County**

**City of Plainfield**

Plainfield Senior Center

**City of Linden**

Linden School No. 4  
 Linden School No. 8

**Borough of Roselle Park**

Robert Gordon Elementary School

**Township of Winfield**

Winfield Elementary School

**StreetSmart Partners**

Begenfield High School  
 City of Orange  
 City of Plainfield  
 Union Township Police  
 Borough of Emerson

**Non-Profit Partners**

Avenues in Motion  
 Atlantic Health  
 Brain Injury Alliance of NJ  
 Cancer Institute of NJ  
 First Fellowship Cathedral, Orange  
 Girl Scouts of Scotch Plains  
 Go Hunterdon  
 Greater Mercer TMA  
 Hackensack Meridian Health  
 Hackensack University Medical Center  
 Hudson TMA  
 Keep Middlesex Moving  
 Long Branch Community That Cares Youth Workgroup  
 Monmouth Museum  
 New Jersey Sports & Exposition Authority  
 Newark Bicycle Shop

Nikhil Badlani Foundation  
 NJ Bike and Walk Coalition  
 NJ Bike & Ped Advisory Council  
 NJ Brain Injury Alliance Pedestrian & Bike Safety Council  
 NJ Police Traffic Officers Association  
 NJHI Health Collaborative  
 NJTPA Regional Active Transportation SAC  
 NJTPA Together North Jersey  
 Passaic County United Way Food Policy Coalition  
 Rahway YMCA  
 Red Bank River Center  
 Ridewise TMA  
 Rutgers University CAIT  
 Rutgers University Bloustein School/Voorhees Transportation Center  
 St. Joseph’s Hospital  
 The Gateway Family YMCA  
 Union County Connects  
 United Way Greater Union County Health Plainfield Coalition  
 United Way Passaic County  
 University Medical Center - Ped Injury Prevention/Safe Kids  
 Vision Zero NJ Alliance  
 West Essex YMCA  
 West Orange Vision Zero Task Force

**Other Partners**

Bird Global Inc.  
 Brick City Peace Collaborative  
 Elmora Hills Blockwatch, Elizabeth  
 NJ Bicycle & Pedestrian Advisory Council  
 NJ Bicycle & Pedestrian Resource Center  
 NJ Department of Community Affairs Planning Division

Passaic Enterprise Zone Development Corporation  
 Plainfield Dairy Queen  
 Safe Routes Resource Center  
 Super Pedestrian  
 Sustainable Jersey  
 Veo

**Consultants**

GHI  
 HDR Inc.  
 Mercer Planning  
 Michael Baker International  
 Millenium Strategies  
 NV5  
 RBA Group  
 Sam Schwartz

# EZ Ride Program Contacts

**Krishna Murthy**

President & CEO  
201-939-4242 ext. 117  
kmurthy@ezride.org

**Avnish Gupta**

COO & General Counsel  
201-939-4242 ext. 118  
agupta@ezride.org

---

## *Bike & Pedestrian Program*

**Lisa Lee**

Director, Bike & Pedestrian Programs  
201-939-4242 ext. 123  
llee@ezride.org

## *EZ Ryde4Life Program*

**Veronica Gallegos**

Assistant Manager - Customer Service  
201-939-4242 ext. 128  
vgallegos@ezride.org

## *Shuttle, Vanpool & Carpool Program*

**Kinga Skora**

Deputy Director, Marketing & Sales  
201-939-4242 ext. 131  
kskora@ezride.org