

The Transporter



Mobility Updates for Community Leaders



Recognizing Champions and Celebrating 40th Anniversary with our Founders

Join us at “Champions for Change,” our annual recognition event, celebrating EZ Ride’s 40th Anniversary. Save the date: September 27th at the Galloping Hill Golf Course in Kenilworth. Our founders, Rich Roberts and Rich Fritzky, will be keynote speakers, adding historic significance to this memorable occasion.

Lunch will be served at noon, allowing us to connect with fellow attendees. Prepare to be inspired by presentations from our Champions and awardees in our transportation programs and Safe Routes to School (SRTS) programs. Join us in honoring these unsung heroes and celebrating their outstanding achievements. Space is limited. Please RSVP at your earliest convenience to be a part of this celebration of excellence and dedication.

[REGISTER](#)



Krishna Murthy
President & CEO | EZ Ride

Enjoy a 50% Discount for Rides with Lyft and Uber



We are pleased to announce an exceptional opportunity for members of the **EZ Ryde4Life** Program. Thanks to the generosity of our funders, we are offering a 50% discount on a limited number of rides each month. Qualified members can enjoy this discount for up to eight rides each month for any purpose. Additionally, for those requiring dialysis, there are eight more rides each month exclusively reserved for this purpose.

Eligibility: To take advantage of this fantastic offer, the rider must meet the eligibility

criteria for any ONE of the following NJ DHS programs:

1. [Pharmaceutical Assistance to the Aged & Disabled \(PAAD\) Program](#)
2. [Senior Gold Prescription Discount Program](#)
3. [NJ Medicaid](#)

This 50% discount cannot be combined with any other program offerings. Rides will be provided on a first-come, first-served basis, as funding is limited. For additional information or any queries you may have, please call Connie Shelley at (201) 939-4242 ext. 140 or email: cshelley@ezride.org

To sign up and become an [EZ Ryde4Life](#) member, please use the link below:

[JOIN NOW](#)

Transportation Investment Yields Over 300% Return for Affordable Housing Alliance Clients



The Affordable Housing Alliance (AHA), a local non-profit organization based in Monmouth and Ocean Counties, has been providing affordable housing and housing-related assistance to individuals and families for over 30 years. Many of their clients faced challenges in accessing secure employment, essential healthcare services, educational opportunities, and in meeting their daily needs due to a lack of personal transportation and limited access to public options.

To address this issue, the AHA partnered with EZ Ride in 2018 to implement the [EZ Ryde4Life](#) program. This innovative program utilizes popular ride-hailing services like Lyft and Uber to offer transportation solutions to the AHA's eligible clients. Under the program, AHA establishes dedicated transportation accounts of up to \$1,000 for each client, enabling them to utilize rideshare services for travel to any location within New Jersey, New York (excluding the outer boroughs), or Pennsylvania.

According to Peter-Donnell Boynton, Director of Housing Stability with the AHA, the program's outcomes have been remarkable. He stated that not only does reliable transportation provide clients access to employment opportunities, but they also manage to retain their jobs, leading to the acquisition of permanent housing and the ability to save enough money to eventually purchase their own vehicles. This comprehensive support structure positively impacts the client's entire life, facilitating a transition from poverty to a financially sustainable lifestyle.

The AHA even observed a monthly net gain of more than \$3,000 for a single client. This success allows the client to move out of the AHA's assistance program and onto the path of self-reliance, serving as a testament to the effectiveness of the [EZ Ryde4Life](#) initiative.

For more information about [EZ Ryde4Life](#) program, please contact Kinga Skora at (201) 939-4242 ext 131 or email kskora@ezride.org.



- NJ Transit Pioneers new Uber-Lyft Program: [NJ.com](#)



Kinga Skora
Deputy Director, Marketing & Sales | EZ Ride

Kearny Avenue Shuttle Fare Increases by \$1.50 on July 3



The Kearny Avenue Shuttle provides transportation between the PATH station in Harrison and bus stops along Ridge Road and Kearny Avenue up to Garden Terrace in North Arlington.

Unlike our other EZ Ride shuttles that rely on multiple corporate sponsors and offer fare-free rides, the Kearny Shuttle is partially funded by NJ Transit, covering 50% of its operating costs, and EZ Ride depends on fare collection from riders to make up the remaining 50%.

To partially cover the rising operational costs, effective July 3rd, EZ Ride will increase the one-way fare from \$1.50 to \$3 per trip.

The shuttle, operating since 2010, receives funding from the New Jersey Job Access and Reverse Commute (NJ-JARC) program and runs on weekdays from 6:20 am to 9:20 am and from 4:30 pm to 7:35 pm. For further details regarding the shuttle, please call (201) 939-4242 ext. 1 or visit our [website](#).

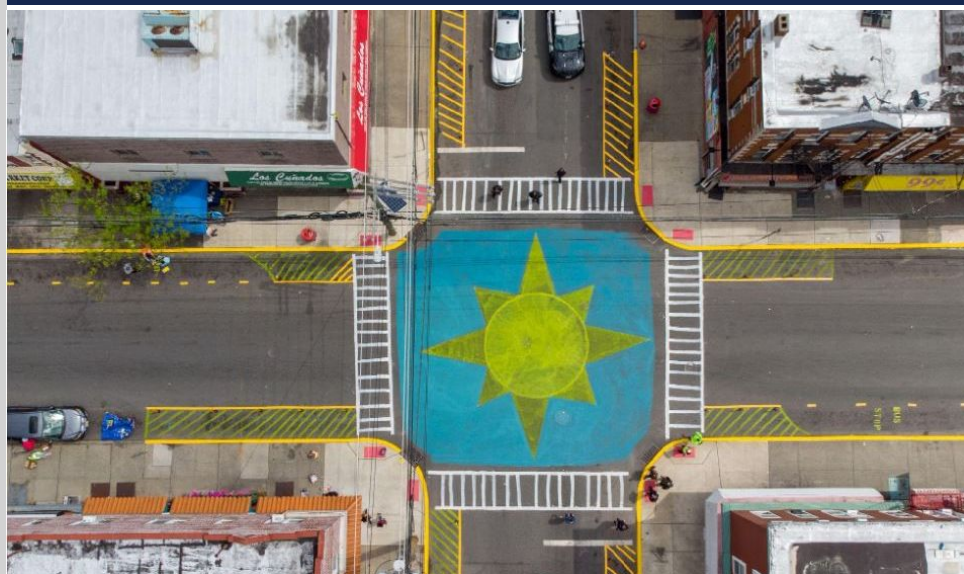


- NJ Turnpike, Parkway tolls will go up: [NJ.com](#)



Avnish Gupta
COO & General Counsel | EZ Ride

Could Art Make Passaic Safer for Walking and Biking?



In recent years, the intersection of Hope Avenue & Monroe Street in the City of Passaic has experienced a concerning number of car, pedestrian, and bicyclist crashes. Recognizing the need for improved safety measures, EZ Ride and the City of Passaic took proactive steps to address the issue.

On May 1st, they collaborated to paint a bright mural and high visibility crosswalks at the intersection. These additions serve as visual cues to alert drivers about the likely presence of pedestrians and enhance their awareness. Additionally, yellow stripes were painted at the street corners, and delineators were installed to prevent cars from parking and improve visibility for pedestrians waiting to cross the street. These measures also aim to reduce the crossing distance for pedestrians, further enhancing their safety.

To ensure community involvement and gather feedback, the project team engaged with Passaic residents and conducted a formal survey. The findings from these efforts will play a crucial role in determining whether the temporary artwork and related improvements should be made permanent. This approach demonstrates a commitment to involving the community and considering their perspectives when making decisions about the City's infrastructure.

By combining artistic interventions, infrastructure improvements, community engagement, and educational initiatives, EZ Ride and the City of Passaic are taking significant steps to make Passaic safer for walking and biking. These efforts not only enhance the physical safety of pedestrians and cyclists but also contribute to the overall livability and well-being of the community.

For more information, please contact Lisa Lee at llee@ezride.org or call (201) 939-4242 ext. 123.



- How street art can make road safer: [Bicycling](#)
- West Orange street mural: [NBF](#)
- Asphalt art safety study: [Bloomberg](#)



Lisa Lee
Deputy Director of Bike & Pedestrian Program | EZ Ride

About EZ Ride



At EZ Ride we believe that a safe, affordable & reliable transportation system is vital to maintaining our quality of life and promoting the economic growth of the region. Transportation is a daily concern for commuters who cannot afford to drive to work, for older adults who do not drive a car, and for businesses whose employees and customers may not have easy access to public transportation.

For almost 40 years, we have helped people overcome transportation barriers by partnering with businesses and governments to implement transportation programs and services like carpools, vanpools, shuttles, biking & walking programs and even transportation with companies like Lyft and Uber.

EZ Ride is a non-profit organization and in 2013, we were recognized for excellence in serving the needs of the community and named the *Urban Community Transportation System of the Year* by the Community Transportation Association of America.

Whatever your mobility needs, EZ Ride is here to help

Download Our Capabilities



Copyright © 2023, Meadowlands Transportation Brokerage Corporation d/b/a EZ Ride

201-939-4242 | info@ezride.org | www.ezride.org



EZ Ride | 144 Park Place East, Wood-Ridge, NJ 07075

[Unsubscribe info@ezride.org](mailto:info@ezride.org)

[Update Profile](#) | [Constant Contact Data Notice](#)

Sent by info@ezride.org powered by



Try email marketing for free today!